

Modular support system for conduits and cables 软管和电缆的模块化支撑系统

The complexity of cable routing requires maximum flexibility to slash installation time!
电缆布线的复杂性要求最大的灵活性，以减少安装时间！

Train utilities
车辆设施



Power distribution
配电



Jumper cables
跳线电缆



External installation
外部安装



Under carriage installation
车下安装

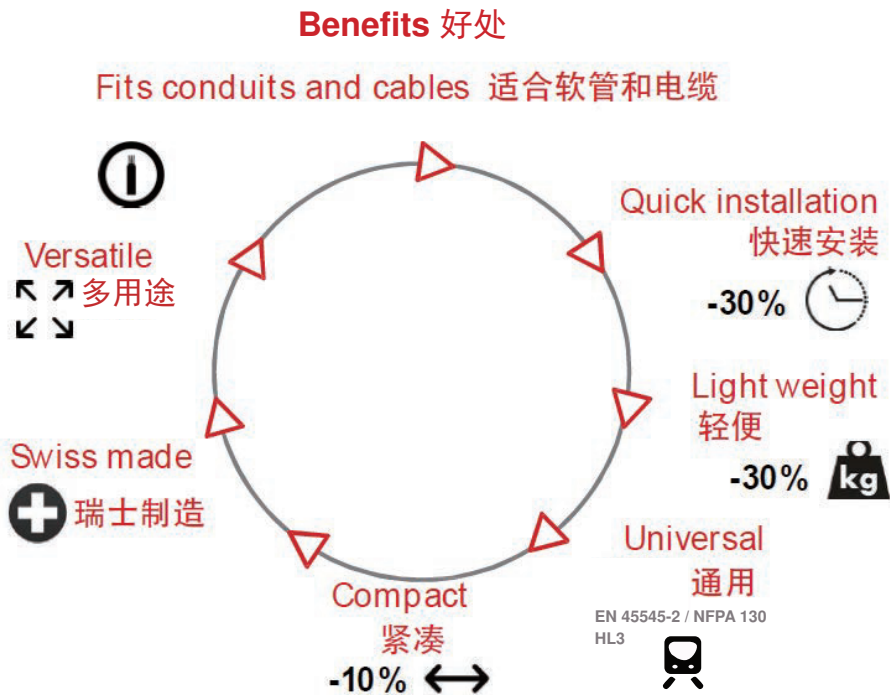


Modular support system for conduits and cables

软管和电缆的模块化支撑系统

Benefits and key features

优点和主要功能



Key features 主要特点

- **Fits conduits and cables:** it provides total flexibility in terms of installation. In fact, the same support holder can be used to fix both conduits and cables, and of various sizes.
适用于软管和电缆:它在安装方面提供了完全的灵活性。事实上，同一个支架可用于固定各种尺寸的软管和电缆。
- **Quick installation:** up to 30% time can be saved during installation. In fact, combinations of multiple conduits or cables can be clamped in one element which is then secured with only two screws.
快速安装:最多可节省30%的安装时间。事实上，多个软管或电缆的组合可以夹在一个元件中，然后用两个螺钉固定。
- **Light weight & compact :** external dimensions are reduced to the very minimum. Internal spacing between adjoining conduits is as small as it can be. Check the dimension table out!
轻巧和紧凑:外部尺寸降至最小。相邻软管之间的内部间距尽可能小。查看尺寸表！
- **Swiss made:** attention to details and installation comfort.
瑞士制造:注重细节和安装舒适性。
- **Versatile:** each element can host different combinations of both conduits and cables, in various and different sizes.
多用途:每个元件可以容纳不同尺寸的软管和电缆的不同组合。
- **Universal:** compliant to both EN 45545-2 and NFPA 130.
通用:符合EN 45545-2 和 NFPA 130。

GPM

modular support system **system support for conduits and cables**
 模块化支撑系统 软管和电缆的支撑系统

In rail vehicle construction and other applications where fixation of parallel running conduits and cables is required.
 在轨道车辆制造和其他应用中，需要固定平行运行的软管和电缆。

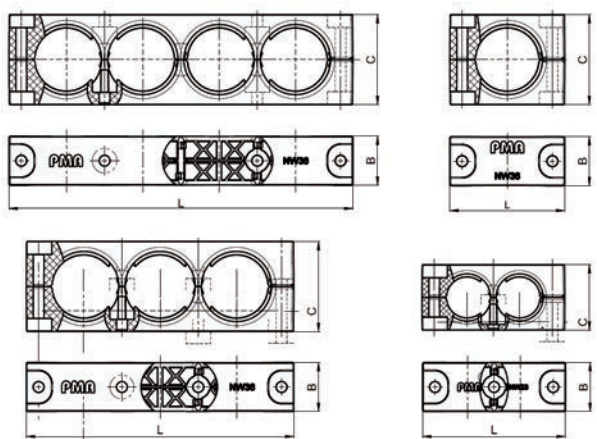


NEW / 新

- High-grade, specially formulated polyamide 6
高级，特殊配方聚酰胺6
- Very good UV resistance and weathering characteristics
非常好的抗紫外线和耐候性能
- High impact resistance
高抗冲击强度
- Free from halogens and cadmium
不含卤素和镉
- RoHS and REACH compliant
RoHS 和 REACH 合规性
- EN 45545-2 HL3 (R22 & R23)
HL3, 根据EN45545-2车内软管R22/车外软管R23标准
- NFPA 130
NFPA 130
- UL 94 (V0)
UL 94 (V0)
- **Features & Benefits:**
特点与优势:
 - Design:
设计:
 - a) Light weight
重量轻
 - b) Quick installation, possible with one hand
快速安装，可单手操作
 - c) Compact design
紧凑型设计
 - d) Conduit rotation possible preventing torsion
软管旋转可防止扭曲
 - e) Axial fixation of conduit and / or cables
软管和 / 或电缆的轴向固定
- Pre-assembly possible:
可预组装:
 - a) For the bottom half of the support
支撑系统的下半部分
 - b) Conduit retained in one half of the support by clips
软管通过夹子固定在支架的另一半中
- Multi-purpose usage:
多用途:
 - a) Support for conduits
支撑软管
 - b) Reducers for conduits of smaller size
可适配减缩器，用于较小尺寸的软管
- User-friendly installation:
便于用户安装:
 - a) Clearance holes for M6 threaded screws for fixation
用于M6螺钉固定的通孔
 - b) Use of allen-screws and hexagonal-head-screws possible
可以使用内六角螺钉和六角头螺钉
 - c) Support clips assist quick installation
支撑夹有助于快速安装
- Temperature range: -50°C to +105°C; short-term: +160°C
温度范围: -50°C 至 +105°C; 短期温度: +160°C

Order No. black 订货号 黑色	Conduit profile 软管 波纹	Conduit size 软管规格 NW 标称内径 (mm)	Number of conduits 软管 数量	Dimensions 尺寸			Packing unit 包装量 (pcs/PU)
				L (mm)	B (mm)	C (mm)	
BGPM-1x10	T	10	1	39.5	30.0	24.5	10
BGPM-1x12	T	12	1	42.5	30.0	28.0	10
BGPM-2x12	T	12	2	61.0	30.0	28.0	10
BGPM-3x12	T	12	3	79.5	30.0	28.0	5
BGPM-4x12	T	12	4	98.0	30.0	28.0	5
BGPM-1x17	T/G	17	1	48.0	30.0	33.0	10
BGPM-2x17	T/G	17	2	72.5	30.0	33.0	10
BGPM-3x17	T/G	17	3	97.0	30.0	33.0	5
BGPM-4x17	T/G	17	4	121.5	30.0	33.0	5
BGPM-1x23	T/G	23	1	55.0	30.0	40.0	10
BGPM-2x23	T/G	23	2	87.0	30.0	40.0	10
BGPM-3x23	T/G	23	3	119.0	30.0	40.0	5
BGPM-4x23	T/G	23	4	151.0	30.0	40.0	5
BGPM-1x29	T/G	29	1	61.0	30.0	46.0	10
BGPM-2x29	T/G	29	2	99.5	30.0	46.0	10
BGPM-3x29	T/G	29	3	137.5	30.0	46.0	5
BGPM-4x29	T/G	29	4	176.0	30.0	46.0	5
BGPM-1x36	T/G	36	1	70.0	30.0	55.0	10
BGPM-2x36	T/G	36	2	116.5	30.0	55.0	10
BGPM-3x36	T/G	36	3	163.0	30.0	55.0	5
BGPM-4x36	T/G	36	4	209.5	30.0	55.0	5
BGPM-1x48	T/G	48	1	82.0	30.0	66.0	10
BGPM-2x48	T/G	48	2	141.0	30.0	66.0	10
BGPM-3x48	T/G	48	3	199.5	30.0	66.0	5
BGPM-4x48	T/G	48	4	258.5	30.0	66.0	5

The above data is given based on "Technical Data Sheet" DB-Nr.40030-02 for reference only.
 For details and the most update version, please contact our sales department for "The latest Technical Data Sheet".
 以上数据来源于PMA工厂“技术数据表”DB-Nr.40030-02。因厂家会随时更新数据，故相关数据仅供参考，
 如要了解详细和最新技术资料请联系我司销售部索取《最新技术数据表》。



modular support system reducers 模块化支撑系统减缩器

GPMR

Reducers for BGPM modular system support for downsizing corrugated conduits.
应用于BGPM模块化系统的减缩器，适配于较小尺寸的软管。

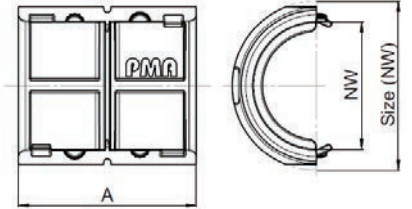


NEW / 新

- High-grade, specially formulated polyamide 6
高级，特殊配方聚酰胺6
- Very good UV resistance and weathering characteristics
非常好的抗紫外线和耐候性能
- Easy installation
易于安装
- Provides axial strain relief for conduits, but allows rotation
为软管提供有效消除轴向应力，但允许旋转
- Combination of multiple reductions possible
减缩器可组成多种可行性组合
- Self-extinguishing
自熄灭性好
- Free from halogens and cadmium
不含卤素和镉
- RoHS and REACH compliant
RoHS 和 REACH 合规性
- EN 45545-2 HL3 (R22 & R23)
HL3, 根据EN45545-2车内软管R22/车外软管R23标准
- NFPA 130
- UL 94 (V0)
- UL 94 (V0)
- Temperature range: -50°C to +105°C; short-term: +160°C
温度范围：-50°C 至 +105°C；短期温度：+160°C

Order No. black 订货号 黑色	Profile T/G 波纹 T/G	Conduit size 软管规格 NW 标称内径 (mm)	Fits to multiple holder BGPM 适配于多种支撑 系统BGPM (mm)	Fits to reduction BGPMR 适配于减缩器 BGPMR (mm)	Dimensions 尺寸 A (mm)	Packing unit 包装量 (pcs/PU)
BGPMR-10T/17	T	10	17	17	30	5
BGPMR-12T/17	T	12	17	17	30	5
BGPMR-17GT/23	T/G	17	23	23	30	5
BGPMR-23GT/29	T/G	23	29	29	30	5
BGPMR-29GT/36	T/G	29	36	36	30	5
BGPMR-36GT/48	T/G	36	48	-	30	5

The above data is given based on "Technical Data Sheet" DB-Nr.40055-01 for reference only.
For details and the most update version, please contact our sales department for "The latest Technical Data Sheet."
以上数据来源于PMA工厂“技术数据表”DB-Nr.40055-01。因厂家会随时更新数据，故相关数据仅供参考，
如要了解详细和最新技术资料请联系我司销售部索取《最新技术数据表》。



modular support system, cable clamping adapter 模块化支撑系统, 电缆夹适配器

GPMK

Cable clamping adapters for BGPM multiple holders and BGPMR reduction half-shells for supporting and holding cables.
电缆夹适配器, 适用于BGPM多个支架和BGPMR减缩瓦形件, 具有支撑和固定电缆的作用。

CE



- High-grade, TPE
高级, TPE制成
- Very good UV resistance and weathering characteristics
非常好的抗紫外线和耐候性能
- Easy installation
易于安装
- Provides axial strain relief for cables
为电缆提供有效消除轴向应力
- Flexible configuration in multiple holders & reductions possible
可灵活配置于多个支架 & 减缩器中
- Self-extinguishing
自熄灭性好
- Free from halogens and cadmium
不含卤素和镉
- RoHS and REACH compliant
RoHS 和 REACH 合规性
- EN 45545-2 HL3 (R22 & R23)
HL3, 根据EN45545-2车内软管R22/车外软管R23标准
- NFPA 130 not applicable
NFPA 130 不适用
- UL 94 (V0)
UL 94 (V0)
- Temperature range: -50°C to +105°C; short-term: +160°C
温度范围: -50°C 至 +105°C; 短期温度: +160°C

Order No. black 订货号 黑色	Clamping range 夹紧范围		Fits to multiple holder BGPM & reduction BGPMR 适配多个 BGPM 支架 & BGPMR 减缩器 尺寸 (NW)	Dimensions 尺寸 A (mm)	Packing unit 包装量 (pcs/PU)
	1 fold BGPM & BGMPR (CR) 1卡环	2,3 & 4 fold BGPM & BGMPR (CR) 2,3 & 4卡环			
BGPMK-10/7-3	7-3	6-4	10	30	5
BGPMK-12/9-5	9-5	8-6	12	30	5
BGPMK-17/15-11	15-11	14-12	17	30	5
BGPMK-17/12-8	12-8	11-9	17	30	5
BGPMK-23/20-16	20-16	19-17	23	30	5
BGPMK-23/18-14	18-14	17-15	23	30	5
BGPMK-29/25-21	25-21	24-22	29	30	5
BGPMK-29/22-18	22-18	21-19	29	30	5
BGPMK-36/34-30	34-30	33-31	36	30	5
BGPMK-36/31-27	31-27	30-28	36	30	5
BGPMK-36/28-24	28-24	27-25	36	30	5
BGPMK-48/46-42	46-42	45-43	48	30	5
BGPMK-48/43-39	43-39	42-40	48	30	5
BGPMK-48/40-36	40-36	39-37	48	30	5
BGPMK-48/37-33	37-33	36-34	48	30	5

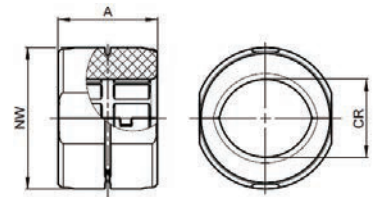
The above data is given based on "Technical Data Sheet" DB-Nr.40056-02 for reference only.
For details and the most update version, please contact our sales department for "The latest Technical Data Sheet."
以上数据来源于PMA工厂“技术数据表”DB-Nr.40056-02。因厂家会随时更新数据, 故相关数据仅供参考, 如要了解详细和最新技术资料请联系我司销售部索取《最新技术数据表》。

Information about NFPA 130:

Table 8.4.1 of NFPA 130 defines categories for the test procedures and performance criteria of materials and assemblies. The BGPMK parts are not included under any category and are therefore not required to be tested.
The materials used to fabricate miscellaneous discontinuous parts are exempt from flammability and smoke emission performance requirements where the exposed surface area of any individual small part is less than 100cm² and where the material does not contribute materially to fire growth. We confirm that the largest surface area of the largest component in this range is 43.55cm² and that the material used is rated to UL94 V0 an EN 45545-2 HL3 material does not contribute materially to fire growth. We confirm that the largest surface area of the largest component in this range is 43.55cm² and that the material used is rated to UL94 V0 an EN 45545-2 HL3.

有关 NFPA 130 的信息:

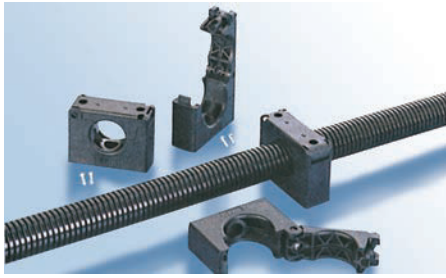
NFPA 130 的 8.4.1 表中定义了材料和组件的测试程序和性能标准的类别。BGPMK 部件不属于任何类别, 因此不需要进行测试。如果任何单个小零件的外露表面积小于 100 平方厘米, 并且材料不会对火势蔓延产生重大影响, 则用于制造各种不连续零件的材料可免除易燃性和烟雾排放性能要求。我们确认此范围内最大组件的最大表面积为 43.55 平方厘米, 所用材料的等级为 UL94 V0 和 EN 45545-2 HL3。



one-piece system supports, stackable 一体设计固定夹子, 可重叠

GPS

In railway vehicle construction, heavy machine building industry and other applications with increased mechanical requirements.
专门为加强机械强度要求设计, 适用于铁路车辆制造、重型机械生产等应用领域。

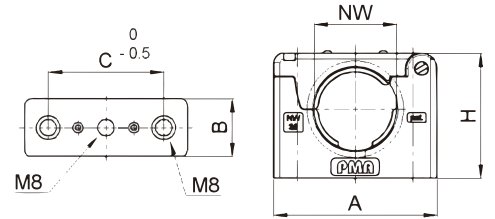


Order No. black 订货号 黑色	Conduit size 软管规格 NW 标称内径 (mm)	Dimensions 尺寸				Packing unit 包装量 (pcs/PU)
		H (mm)	A (mm)	B (mm)	C (mm)	
* BGPS-12/01	12	51.0	70.0	30.0	45.0	30
BGPS-17	17	51.0	70.0	30.0	45.0	30
BGPS-23	23	51.0	70.0	30.0	45.0	30
BGPS-29	29	65.0	85.0	30.0	60.0	20
BGPS-36	36	65.0	85.0	30.0	60.0	10
BGPS-48	48	92.5	115.0	30.0	90.0	10
BGPS-56	56	92.5	115.0	30.0	90.0	10

- High - grade, specially formulated polyamide 6
高级, 特殊配方聚酰胺6制成
- One-piece construction, stackable
一体式结构, 可叠加
- Very high impact resistance; very good chemical properties
非常高的抗冲击强度; 非常好的化学性能
- Heavy design, high retention forces; applicable with standard metal C rails
重载设计, 高保持力; 可直接应用在标准C型导轨上
- Easy pre-installation by conduit snap-in
通过卡入软管轻松预安装
- Clasp for easy pre-mounting and final assembly
便于预安装和最终组装的扣环
- Free from halogens and cadmium
不含卤素和镉
- RoHS and REACH compliant; UL 94 (V0)
RoHS 和 REACH 合规性; UL 94 (V0)
- Very good UV resistance and weathering characteristics
非常好的抗紫外线和耐候性能
- EN 45545-2 HL3 (R22 & R23)
HL3, 根据EN45545-2车内软管R22/车外软管R23标准
- NFPA 130
NFPA 130
- Fits both conduit profiles - fine (T) and coarse (G)
适用软管类型-细波纹 (T) 和粗波纹 (G)
- The following nominal widths can be combined for stacking:
NW12 with NW17 + NW23, NW 17 with NW 23, NW 29 with NW 36,
NW 48 with NW 56
下面几种尺寸可以叠加安装:
NW12 和 NW17+NW23, NW 17 和 NW 23, NW 29 和 NW 36,
NW 48 和 NW 56
- Temperature range: -50°C to +105°C; short-term to +160°C
温度范围: -50°C 至 +105°C; 短期范围: +160°C
- Content of delivery: system support, 2 pcs PT screws stainless steel V2A
包装配件: 固定夹子, 2个不锈钢 V2A PT 螺钉

* This size will be delivered with a half-shell insert.
供货时会包括瓦形插入件。

The above data is given based on "Technical Data Sheet" DB-Nr.40025-08 for reference only.
For details and the most update version, please contact our sales department for "The latest Technical Data Sheet".
以上数据来源于PMA工厂“技术数据表”DB-Nr.40025-08。因厂家会随时更新数据, 故相关数据仅供参考, 如要了解详细和最新技术资料请联系我司销售部索取《最新技术数据表》。



GPS-SP

welding plate for system support 固定夹子的焊接板

In combination with system support GPS. 与GPS固定夹子组合应用。

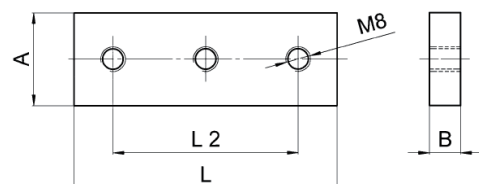


Order No. black 订货号 黑色	Conduit size 软管规格 NW 标称内径 (mm)	Dimensions 尺寸				Packing unit 包装量 (pcs/PU)	MOQ 最小起订量
		A (mm)	B (mm)	L2 (mm)	L (mm)		黑色 (pcs)
GPS-SP17/23-ST	17 + 23	30.0	10.0	44.8	70.0	10	-
# GPS-SP29/36-ST	29 + 36	30.0	10.0	59.7	80.0	10	10
# GPS-SP48/56-ST	48 + 56	30.0	10.0	89.5	110.0	10	10

标记为 # 的产品有最小起订量 (MOQ)

- Steel ST-37
ST-37 钢制
- For fixation of the one-piece system supports GPS
应用于一体式GPS系列固定夹子
- For reinforcement of the base plate or if no bore holes can be drilled
用于加固底板或不钻孔的情况
- Increases the retention force of system support GPS
增加GPS固定夹子的保持力

The above data is given based on "Technical Data Sheet" DB-Nr.40027-02 for reference only.
For details and the most update version, please contact our sales department for "The latest Technical Data Sheet".
以上数据来源于PMA工厂“技术数据表”DB-Nr.40027-02。因厂家会随时更新数据, 故相关数据仅供参考, 如要了解详细和最新技术资料请联系我司销售部索取《最新技术数据表》。



FH-O

one-piece system supports 单个软管固定卡子

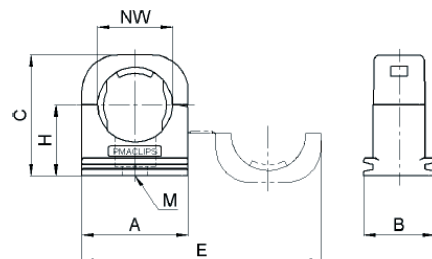
In machine building and installation applications. 适用于机械及安装系统。



Order No. black 订货号 黑色	Order No. grey 订货号 灰色	Conduit size 软管规格 NW 标称内径 (mm)	Dimensions 尺寸						Packing unit 包装量 (pcs/PU)
			H (mm)	M (mm)	E (mm)	A (mm)	B (mm)	C (mm)	
BFH-07-0	SFH-07-0	07	13.5	M4	40.5	17.0	20.0	21.5	100
BFH-10-0	SFH-10-0	10	15.5	M5	47.5	20.5	20.0	24.5	100
BFH-12-0	SFH-12-0	12	16.5	M5	54.5	24.0	20.0	27.0	100
BFH-17-0	SFH-17-0	17	20.0	M6	68.0	30.0	20.0	34.0	100
BFH-23-0	SFH-23-0	23	24.0	M6	85.0	38.5	20.0	42.0	100
BFH-29-0	SFH-29-0	29	27.0	M6	99.0	45.5	20.0	48.0	100
BFH-36-0	SFH-36-0	36	31.0	M6	119.0	55.5	20.0	56.0	50
BFH-48-0	SFH-48-0	48	37.0	M6	143.0	67.5	20.0	68.0	20

- High-grade, specially formulated polyamide 6
高级, 特殊配方聚酰胺6制成
- One-piece construction
一体式结构
- Very high impact resistance
非常高的抗冲击强度
- Optimal axial strain relief due to integrated rib
集成的肋状凸起设计, 有效消除轴向应力
- Suitable for overhead installations due to safety lid
由于自带安全盖, 适用于架空安装
- High retention forces
高保持力
- Quick mounting due to single hole fixing
通过单孔快速安装
- Very good chemical properties
非常好的化学性能
- Free from halogens and cadmium
不含卤素和镉
- RoHS and REACH compliant
RoHS 和 REACH 合规性
- Very good UV resistance and weathering characteristics, particularly in black
非常好的抗紫外线和耐候性能, 尤其是黑色
- Fits to PMACLIP - BFHS - rail for system support
适配于PMACLIP - BFHS 导轨系统
- Fits both conduit profiles - fine (T) and coarse (G)
适用软管类型 - 细波纹 (T) 和粗波纹 (G)
- Temperature range: -50°C to +105°C; short-term to +160°C
温度范围: -50°C 至 +105°C; 短期温度: +160°C

The above data is given based on "Technical Data Sheet" DB-Nr.40001-07 for reference only.
For details and the most update version, please contact our sales department for "The latest Technical Data Sheet."
以上数据来源于PMA工厂“技术数据表”DB-Nr.40001-07。因厂家会随时更新数据, 故相关数据仅供参考, 如要了解详细和最新技术资料请联系我司销售部索取《最新技术数据表》。



FHS

rail for system support 软管固定卡子用导轨

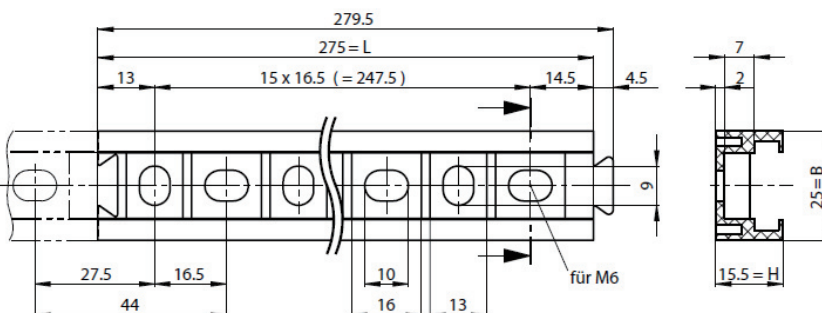
In machine building and installation applications. 适用于机械及安装系统。



Order No. black 订货号 黑色	Order No. grey 订货号 灰色	Conduit size 软管规格 NW 标称内径 (mm)	Dimensions 尺寸			Packing unit 包装量 (pcs/PU)	MOQ 最小起订量 黑色B / 灰色S (pcs)
			L (mm)	B (mm)	H (mm)		
BFHS-00	SFHS-00	07-48	275.0	25.0	15.5	10	-
Additional rails, position to distance spacers / 附加导轨, 定位或间隔器							
BFHS-10	#SFHS-10	Rail / 导轨					- / 10
BFHS-PH	SFHS-PH	Position spacer with screws 定位间隔器连螺丝	24	12.0	6.0	20	-
#BFHS-PH1	#SFHS-PH1	Distance spacers / 间隔器	20	12.0	4.0	100	500 / 500

- High-grade, glass fibre reinforced polyamide 6
高级, 特殊配方聚酰胺6, 玻璃纤维加强型制成
- Extremely robust construction
非常坚固的结构
- High stiffness
高硬度
- Excellent impact resistance
极好的抗冲击强度
- Flexible assembly of clips for fixation of various conduit sizes
管夹组装灵活, 用于固定各种软管尺寸
- Positioning and distance spacers available
用于固定位置和距离
- Easy installation
易于安装
- Good chemical resistance properties
良好的耐化学性
- Free from halogens and cadmium
不含卤素和镉
- RoHS and REACH compliant
RoHS 和 REACH 合规性
- Temperature range: -50°C to +105°C; short-term to +160°C
温度范围: -50°C 至 +105°C; 短期温度: +160°C
- Content of delivery: BFHS-00: rail, 2 position supports with screws
包括配件: BFHS-00: 轨, 两个定位支架连螺丝

The above data is given based on "Technical Data Sheet" DB-Nr.40003-03 for reference only. **标记为 # 的产品有最小起订量 (MOQ)**
For details and the most update version, please contact our sales department for "The latest Technical Data Sheet."
以上数据来源于PMA工厂“技术数据表”DB-Nr.40003-03。因厂家会随时更新数据, 故相关数据仅供参考, 如要了解详细和最新技术资料请联系我司销售部索取《最新技术数据表》。



VH

system supports

软管夹子

In machine building and installation applications particularly in electrical cabinets.
应用于机械制造和安装应用，尤其在电气柜中。

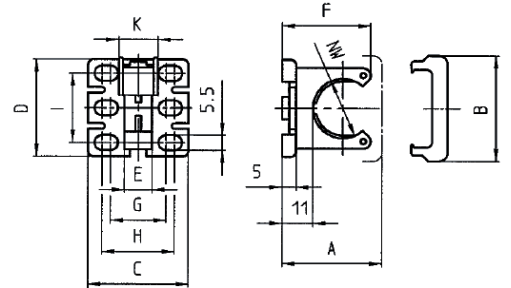


Order No. Complete 订货号整套	Order No. support 订货号支撑	Order No. clip 订货号卡子	Conduit size 软管规格 NW 标称内径 (mm)	Dimensions 尺寸				Packing unit 包装量 (pcs/PU)	MOQ 最小起订量 黑色 (pcs)
				A (mm)	B (mm)	C (mm)	D (mm)		
BVH-17-000	#BVH-17-010	#BVH-17-020	17	36	38	38	35	100	100
BVH-23-000	BVH-23-010	BVH-23-020	23	44	44	44	35	100	-
BVH-29-000	BVH-29-010	BVH-29-020	29	52	52	52	46	100	-
BVH-36-000	BVH-36-010	BVH-36-020	36	62	62	62	53	100	-
BVH-48-000	BVH-48-010	BVH-48-020	48	72	77	77	66	60	-

- High-grade, specially formulated polyamide 6
高级，特殊配方聚酰胺6制成
- Mounting alternatives through six hole fastening
通过六孔紧固安装方案
- Completely safe against turning / movement
完全安全的转动 / 移动
- Optimal strain relief due to integrated rib
集成的肋状凸起设计，有效消除轴向应力
- Maximum security with additional safety clip
额外的安全夹提供最大安全性
- Excellent impact strength
极好的抗冲击强度
- Self-extinguishing
自熄灭性好
- Very good UV resistance and weathering characteristics
非常好的抗紫外线和耐候性能
- EN 45545-2 HL3 (R22 & R23)
HL3, 根据EN45545-2车内软管R22 / 车外软管R23标准
- NFPA 130
NFPA 130
- UL 94 (V0)
UL 94 (V0)
- Fits both conduit profiles-fine (T) and coarse (G)
适用软管类型-细波纹 (T) 和粗波纹 (G)
- Temperature range: -50°C to +105°C; short-term to +160°C
温度范围: -50°C 至 +105°C; 短期温度: +160°C

标记为 # 的产品有最小起订量 (MOQ)

The above data is given based on "Technical Data Sheet" DB-Nr.40010-07 for reference only.
For details and the most update version, please contact our sales department for "The latest Technical Data Sheet".
以上数据来源于PMA工厂“技术数据表”DB-Nr.40010-07。因厂家会随时更新数据，故相关数据仅供参考，如要了解详细和最新技术资料请联系我司销售部索取《最新技术数据表》。



GL

tube clamps 管夹

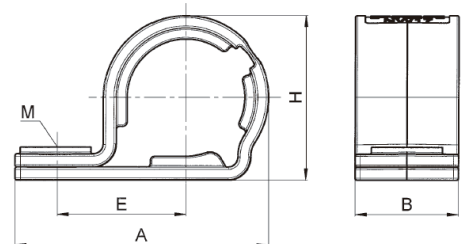
In wide range of applications in all industries. 在工业行业中被广泛的应用。



Order No. black 订货号黑色	Order No. grey 订货号灰色	Conduit size 软管规格 NW 标称内径 (mm)	Dimensions 尺寸				Packing unit 包装量 (pcs/PU)	MOQ (pcs) 最小起订量 灰色 S (pcs)
			A (mm)	B (mm)	H (mm)	M (mm)		
BGL-07	#SGL-07	07	25.0	13.0	13.5	M4	100	1500
BGL-10	SGL-10	10	27.0	13.0	16.0	M5	100	-
BGL-12	SGL-12	12	31.0	13.0	19.5	M6	100	-
BGL-17	SGL-17	17	39.5	16.0	25.5	M5	100	-
BGL-23	#SGL-23	23	49.0	16.0	34.0	M5	100	1200
BGL-29	#SGL-29	29	57.0	19.0	40.0	M6	100	1200

标记为 # 的产品有最小起订量 (MOQ)

The above data is given based on "Technical Data Sheet" DB-Nr.60024-03 for reference only.
For details and the most update version, please contact our sales department for "The latest Technical Data Sheet".
以上数据来源于PMA工厂“技术数据表”DB-Nr.60024-03。因厂家会随时更新数据，故相关数据仅供参考，如要了解详细和最新技术资料请联系我司销售部索取《最新技术数据表》。



- High-grade, specially formulated polyamide 6
高级，特殊配方聚酰胺6制成
- Integrated rib provides axial strain relief
集成的肋状凸起设计，有效消除轴向应力
- Allows turning of the conduit thus avoiding torsion stresses
允许软管径向运动避免产生应力
- Pre-fixation on the conduit possible
可以预先安装在软管上
- Allows solid fixation with one screw
仅用一个螺钉固定本体
- Free from halogens and cadmium
不含卤素和镉
- RoHS and REACH compliant
RoHS 和 REACH 合规性
- Very good UV resistance and weathering characteristics, particularly in black
非常好的抗紫外线和耐候性能，尤其是黑色
- Fits both conduit profiles-fine (T) and coarse (G)
适用软管类型-细波纹 (T) 和粗波纹 (G)
- No corrosion
防腐蚀
- Temperature range: -50°C to +105°C; short-term to +160°C
温度范围: -50°C 至 +105°C; 短期范围: +160°C

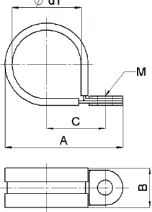
SGB

tube clamps 管夹

In wide range of applications in all industries. 在工业行业中被广泛的应用。



- Clamp: galvanized steel (stainless steel available on request)
钢制镀锌 (可根据要求提供不锈钢)
- Profile: elastomer (EPDM)
外包弹性体 (EPDM)
- For the mounting of static conduits
用于静态软管安装
- Smooth connection to PMAFLEX corrugated conduits
平滑固定PMAFLEX软管
- Good resistance to ozone and ageing
良好的抗臭氧和耐老化性能
- Free from halogens and cadmium
不含卤素和镉
- RoHS and REACH compliant
RoHS 和 REACH 合规性
- Conforms to: DIN 3016
符合 DIN 3016 标准
- Temperature range: -50°C to +105°C; short-term to +160°C
温度范围: -50°C 至 +105°C; 短期温度: +160°C



Order No. 订货号	Conduit size 软管规格 NW 标称内径 (mm)	Dimensions 尺寸					Packing unit 包装量 (pcs/PU)	MOQ 最小起订量 (pcs)
		d1 (mm)	A (mm)	B (mm)	C (mm)	M (mm)		
SGB-07	07	10.0	22.1	13.0	10.2	M4	100	-
# SGB-07-6.4	07	10.0	32.3	19.0	16.2	M6	100	100
SGB-09	10	12.0	24.6	13.0	11.7	M4	100	-
# SGB-09-6.4	10	12.0	34.3	19.0	17.2	M6	100	100
# SGB-09-8.4	10	12.0	41.3	25.0	20.5	M8	100	100
SGB-11	12	15.0	27.6	13.0	13.2	M4	100	-
# SGB-11-6.4	12	15.0	37.5	19.0	18.7	M6	100	100
# SGB-11-8.4	12	15.0	44.3	25.0	22.0	M8	100	100
SGB-16	17	21.0	37.5	15.0	16.5	M5	100	-
# SGB-16-6.4	17	21.0	43.5	19.0	21.7	M6	100	100
# SGB-16-8.4	17	21.0	50.3	25.0	25.0	M8	100	100
SGB-21	23	28.0	44.9	15.0	22.0	M5	50	-
# SGB-21-6.4	23	28.0	50.5	19.0	25.2	M6	50	100
# SGB-21-8.4	23	28.0	55.7	25.0	28.5	M8	50	100
SGB-29	29	34.0	55.9	19.0	28.2	M6	30	-
# SGB-29-8.4	29	34.0	61.5	25.0	31.5	M8	30	1200
SGB-36	36	41.0	63.5	19.0	31.7	M6	20	-
# SGB-36-8.4	36	41.0	70.5	25.0	35.0	M8	20	100
SGB-48	48	53.0	74.9	19.0	37.7	M6	20	-
# SGB-48-8.4	48	53.0	82.5	25.0	41.0	M8	20	100

标记为 # 的产品有最小起订量 (MOQ)

The above data is given based on "Technical Data Sheet" DB-Nr.60020-18 for reference only.
For details and the most update version, please contact our sales department for "The latest Technical Data Sheet".
以上数据来源于PMA工厂“技术数据表”DB-Nr.60020-18。因厂家会随时更新数据，故相关数据仅供参考，如要了解详细和最新技术资料请联系我司销售部索取《最新技术数据表》。

GH

tube clamps 管夹

In wide range of applications in all industries. 在工业行业中被广泛的应用。



- High-grade, specially formulated polyamide 6
高级, 特殊配方聚酰胺6制成
- One-piece design
一体式设计
- Integrated rib provides axial strain relief
集成的肋状凸起设计, 有效消除轴向应力
- Allows turning of the conduit thus avoiding torsion stresses
允许软管径向运动避免产生应力
- Pre-fixation on the conduit possible
可以预先安装在软管上
- Allows solid fixation with two screws
用两个螺钉固定本体
- No corrosion
防腐蚀
- Free from halogens and cadmium
不含卤素和镉
- RoHS and REACH compliant
RoHS 和 REACH 合规性
- Very good UV resistance and weathering characteristics, particularly in black
非常好的抗紫外线和耐候性能, 尤其是黑色
- Fits both conduit profiles-fine (T) and coarse (G)
适用软管类型-细波纹 (T) 和粗波纹 (G)
- Temperature range: -50°C to +105°C; short-term to +160°C
温度范围: -50°C 至 +105°C; 短期范围: +160°C

Order No. black 订货号 黑色	Order No. grey 订货号 灰色	Conduit size 软管规格 NW 标称内径 (mm)	Dimensions 尺寸					Packing unit 包装量 (pcs/PU)	MOQ 最小起订量 灰色S (pcs)
			H (mm)	E (mm)	A (mm)	B (mm)	M (mm)		
BGH-23	# SGH-23	23	31.5	46.0	58.0	16.0	2 x M5	50	2100
BGH-29	# SGH-29	29	37.5	55.0	70.0	19.0	2 x M6	50	1000
BGH-36	# SGH-36	36	46.0	65.0	80.0	24.0	2 x M6	50	600
BGH-48	# SGH-48	48	58.5	78.0	94.0	24.0	2 x M6	50	600
BGH-56	# SGH-56	56	72.0	98.0	118.0	26.0	2 x M8	10	500
BGH-70	# SGH-70	70	85.0	110.0	130.0	30.0	2 x M8	10	480
BGH-95	# SGH-95	95	112.5	136.0	156.0	30.0	2 x M8	10	480

标记为 # 的产品有最小起订量 (MOQ)

The above data is given based on "Technical Data Sheet" DB-Nr.60025-05 for reference only.
For details and the most update version, please contact our sales department for "The latest Technical Data Sheet".
以上数据来源于PMA工厂“技术数据表”DB-Nr.60025-05。因厂家会随时更新数据，故相关数据仅供参考，如要了解详细和最新技术资料请联系我司销售部索取《最新技术数据表》。

